

Paul Mason Associates



Orchard Drive, Mayland, CM3 6EP
£450,000

ACCOMMODATION

GROUND FLOOR

Porch

Entrance Hall

Kitchen/Breakfast Room

4.6m x 2.6m (15'1" x 8'6")

Lounge/Dining Room

6.5m x 3.6m (21'3" x 11'9")

Cloakroom/WC

Utility Room

2.4m x 1.5m (7'10" x 4'11")

FIRST FLOOR

Landing

Bedroom One

4.0m x 3.5m (13'1" x 11'5")

En-Suite

Bedroom Two

3.6m x 3.6m (11'9" x 11'9")

Bedroom Three

3.5m x 2.4m (11'5" x 7'10")

Bedroom Four

3.0m x 2.8m (9'10" x 9'2")

Family Bathroom

EXTERIOR

Integral Garage

5.0m x 3.6m (16'4" x 11'9")

Rear Garden

Frontage

Property Services

Gas -

Electric - Mains

Water - Mains

Drainage - Mains

Heating -

Local Authority -

Viewings

Strictly by appointment only through the selling agent Paul Mason Associates 01245 382555.

Important Notices

We wish to inform all prospective purchasers that we have prepared these particulars including text, photographs and measurements as a general guide. Room sizes should not be relied upon for carpets and furnishings. We have not carried out a survey or tested the services, appliances and specific fittings. These particulars

do not form part of a contract and must not be relied upon as statement or representation of fact.

GROUND FLOOR



1ST FLOOR





Paul Mason Associates

35 The Street
Latchingdon
Chelmsford
Essex
CM3 6JP

T: 01621 742 310

Bruce House
17 The Street
Hatfield Peverel
Chelmsford
CM3 2DP

T: 01245 382 555

Sales | Lettings | Development | Investment

F: 01245 381257 E: info@paulmasonassociates.co.uk www.paulmasonassociates.co.uk

Paul Mason Associates Limited Registered in England Number - 6767946
Registered Office - Bruce House, The Street, Hatfield Peverel CM3 2DP





Paul Mason Associates

35 The Street
Latchingdon
Chelmsford
Essex
CM3 6JP

T: 01621 742 310

Bruce House
17 The Street
Hatfield Peverel
Chelmsford
CM3 2DP

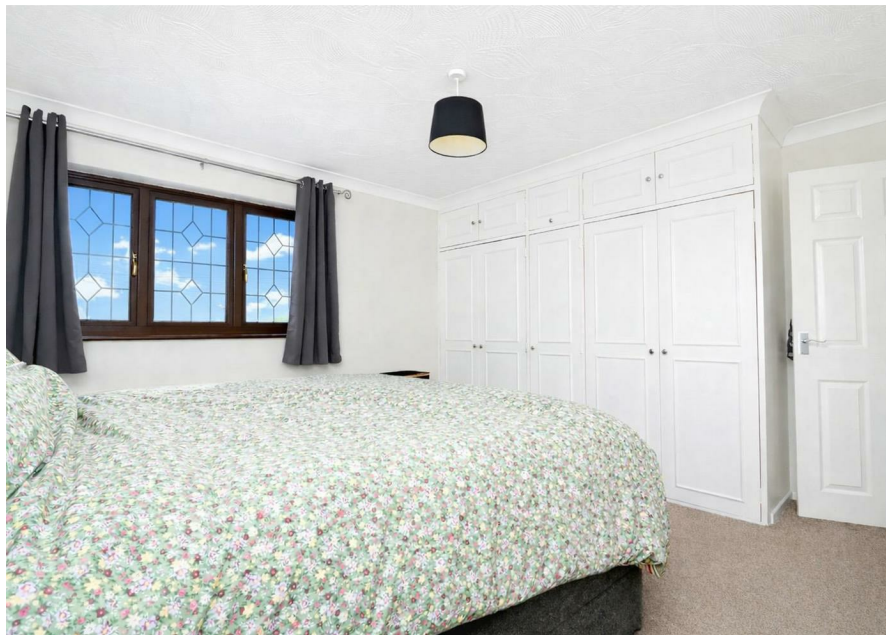
T: 01245 382 555

Sales | Lettings | Development | Investment

F: 01245 381257 E: info@paulmasonassociates.co.uk www.paulmasonassociates.co.uk

Paul Mason Associates Limited Registered in England Number - 6767946
Registered Office - Bruce House, The Street, Hatfield Peverel CM3 2DP





Paul Mason Associates

35 The Street
Latchingdon
Chelmsford
Essex
CM3 6JP
T: 01621 742 310

Bruce House
17 The Street
Hatfield Peverel
Chelmsford
CM3 2DP
T: 01245 382 555

Sales | Lettings | Development | Investment

F: 01245 381257 E: info@paulmasonassociates.co.uk www.paulmasonassociates.co.uk

Paul Mason Associates Limited Registered in England Number - 6767946
Registered Office - Bruce House, The Street, Hatfield Peverel CM3 2DP





Paul Mason Associates

35 The Street
Latchingdon
Chelmsford
Essex
CM3 6JP
T: 01621 742 310

Bruce House
17 The Street
Hatfield Peverel
Chelmsford
CM3 2DP
T: 01245 382 555

Sales | Lettings | Development | Investment

F: 01245 381257 E: info@paulmasonassociates.co.uk www.paulmasonassociates.co.uk

Paul Mason Associates Limited Registered in England Number - 6767946
Registered Office - Bruce House, The Street, Hatfield Peverel CM3 2DP

